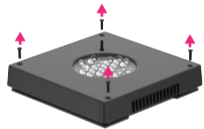


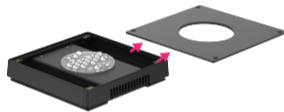
XR15 Diffuser Installation

1.



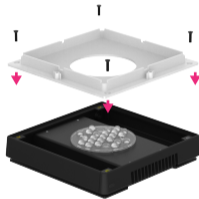
Remove the four corner screws from the lens frame.

2.



Remove the lens frame.

3.



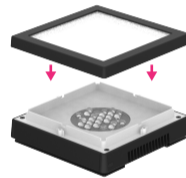
Place the reflector onto the light assembly.

4.



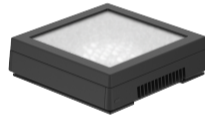
Fasten the reflector with the original four corner screws.

5.



Place the magnetic diffuser plate including the diffuser film over the light assembly.

6.



The diffuser is now ready to use.